

CARING COMMUNITIES
PARTNERSHIPS

ST. FRANCOIS COUNTY COMMUNITY PARTNERSHIP'S

Partnership Report

January 2024

Partnership News!



Our Mission

To build, nurture, and strengthen families, insuring that every person has the opportunity to become a healthy, productive, and contributing member of the community.

Our Goals:

- Parents Working
- Healthy Children & Families
- Children & Families Safe in Homes & Communities
- Children Prepared to Enter School
- Children & Youth Succeeding in School

In This Issue:

Partnership News 2023-2024	1
Prevention Consultants Update	2
2024 25th Annual Health and Resource Expo 2023 Season of Hope Thank You!	Insert
Partnership Spotlight Vocational Rahab	3
Recurring classes and other events!	4

Happy New Year Everyone,

We hope the Holiday Season has treated you well, and your 2024 has started off blessed.

We finished out 2023 with our signature program Season of Hope helping 344 families and 931 children have a Christmas that otherwise would not have been able to. SFCCP did change things up a bit this year by making the decision to go 100% gift card purchases in lieu of shopping for gifts for almost a thousand children. And we have to say, it was very successful. Early survey reports are indicating the parents were very happy with this route so they were able to do the shopping for their children and make the purchases that fit their child's needs the best.

For those who donated to help make Season of Hope 2023 such a success, we cannot thank you enough. It is only due to the generosity of our great community that we are able to bring so much happiness and joy to the children on Christmas morning. However, the work is never done when it comes to such a big program, and we are already working on Season of Hope 2024, so watch for exciting announcements in the near future.

Our next big event is our 25th Annual Health and Resource Expo, scheduled for Saturday, April 13th at Mineral Area College. This event has been a huge success in the past, yet took a hit during the Covid years. But we are working hard to make it bigger and better than ever. Vendors have been signing up for the event since September, and if you are interested in reserving a booth for your business or organization, see the insert in our newsletter for more information.



Looking forward into 2024, we are hoping to continue to make community partnerships with organizations and businesses alike, making our community even stronger. If you would like to get involved with St. Francois County Community Partnership or any of its partners, the best place to start is with our monthly board meetings. They are held on the second Wednesday of the month at noon in our board meeting room located at 1101 Weber Road, Suite 102, Farmington. This is a great way to network, learn more about the many things happening, and resources available in St. Francois County.

Dawn Sander, Office Manager

SFCCP Board Meeting

Wednesday at Noon,

January 10, 2024

Public Welcome to Attend, 1101 Weber Rd., Room 102, Farmington

Tune In To Our Monthly Radio

Program on KFMO with

Mike Ramsey

Community Partnership Radio Show

on the 4th Mon., 7:35 a.m.

25th ANNUAL HEALTH AND RESOURCE EXPO

Mark Your Calendars!

Our 25th Annual Community Health and Resource Expo is in motion. We have set the date for April, 13, 2024.

The expo will begin at 8am and end at noon.

If you have participated in our Expo in the past, you know what a great event this is for our community showing the resources that are available.

If you have not participated in our Expo in the past, we invite you to come join the fun!

For more information about how you can participate in our 25th Annual Community Health and Resource Expo,

contact Dawn Sander at St. Francois County Community Partnership 573-760-0212

or via email dawn@sfccp.org.

See insert for registration

WE LOOK FORWARD TO HEARING FROM YOU!

Prevention Updates



We've been hard at work, bringing these incredible prevention programs to every school in our local area. Recently, we completed the "Too Good for Drugs" program with North County High School and Bismarck's 6th, 7th, and 8th grades. It feels amazing to see our commitment making a tangible impact, fostering a safer and healthier environment.

Attending the Prevention Conference in Columbia, MO, on November 13th and 14th was an enlightening experience. We delved deep into the Too Good for Drugs program and got a sneak peek into the upcoming Drug Free Communities initiative. These moments of learning are what drive us to make a real change.

In early December, I had the fantastic opportunity to attend the SAPST certification training in Kansas City, MO. This training expanded our toolkit on strategic prevention framework, equipping us with even more ways to positively influence our communities.

Looking forward, we're excited about our upcoming plans for January. We'll be starting the program with the other half of Bismarck's 6th, 7th, and 8th grades, and kicking off the new year with Central 5th grade. It's all about expanding our reach and ensuring that we can positively impact as many students as possible.

Brandon Tucker,

Prevention Consultants Program Director





Missouri Vocational Rehabilitation (MVR) specializes in services that assist eligible individuals with disabilities prepare for, secure, retain, advance in, or regain employment. To be eligible, a person must have a physical or mental impairment that causes limitations with working and require vocational rehabilitation services to be successfully employed. MVR's assistance may include employment services, training, assistive technology, hearing aids, rehabilitation technology, and guidance and counseling. Services are individualized for the unique need of the consumer.

There are offices across the state that serve every Missouri county. The Farmington office covers Ste. Genevieve, St. Francois, southern Jefferson, Iron, Washington, Madison,

Wayne, and Reynolds counties. The MVR program serves adults and high school students. MVR partners with MU Pre-Employment Transition Services to provide additional services to students with an IEP, 504 plan, or an identified disability within the high school setting. Additionally, MVR may be able to assist high school juniors and seniors with disabilities obtain work experience through its Summer Work Experience Program.

MVR also partners with SEMO BH, and BJC to offer Individualized Placement Services that use a wraparound approach to assist consumers with significant mental health issues be successful in the work arena. Please feel free to reach out to discuss how MVR might be right for you!

Our main number is 573.218.6100. You can find more information on MVR's website at <https://dese.mo.gov/adult-learning-rehabilitation-services/vocational-rehabilitation>.

Mary Ross,
Site Director
Farmington Location



United Way of
St. Francois County



Don't forget to
Like, Share,
and Follow us on
Facebook.



And invite all your friends to do the same!



The Partnership Report is published twelve times a year by:

St. Francois County Community Partnership

1101 Weber Road, Suite 202, Farmington, MO 63640

Phone: (573)431-3173 / 760-0212

www.sfccp.org

Bill Bunch Executive Director

Brandon Tucker Prevention Consultants Program Director

Dawn Sander Office Manager

Kaye DeGonia Office Assistant / ACT Specialist

Tammy Zook Fiscal Director

St. Francois County Community Partnership
1101 Weber Rd., Suite 202



NON-PROFIT
U.S. POSTAGE
PAID
FARMINGTON, MO 63640
PERMIT NO. 75

If you would like to be removed from our mailing list, please call 573-760-0212 or email dawn@sfccp.org

SFCCP Board of Directors

- Rob Baker - East Missouri Action Agency
- Shelly Bess - Shared Blessings, Inc.
- Vickey Bonney - DHEWD
- Bill Bunch - Executive Director SFCCP (ex officio)
- Ashley Deason - Bismarck School District
- T.R. Dudley - Great Mines Health Center
- Brandon Gregory - North County School District
- Sarah Haas - Daily Journal
- Elizabeth Hartmann - Children's Division
- Connie MacBride - BJC Behavioral Health
- Tina Miller - Mineral Area College
- Marsha Petty - Farmington School District
- Linda Ragsdale - St. Francois County Health Center
- Stephanie Roesslein - Boyer Funeral Homes
- Mary Ross - Vocational Rehabilitation
- Stephanie Seise - Central School District
- Kyle Smith - Department of Corrections
- Cassie Thomas - United Way of St. Francois County
- Lindsey Ulen - St. Francois County Juvenile Office
- Alan Wells - 9-1-1 Joint Commission
- Randy Windsor - Life Center for Independent Living
- Jeri Wright - CASA of the Parkland
- Becky Yount - West County School District

RECURRING CLASSES & OTHER EVENTS

- Life After Loss Support Group:** Sponsored by Heart & Soul Hospice, the group is a safe place to process grief, learn healthy coping skills & connect with others. Open to public. **3rd Thursday of each month**, 4:30-6:00 p.m. at 412 Cayce St., Farmington. Please call 573-756-7066 or email farmingtonhospice@pmma.org.
- GriefShare:** Held at Grace Presbyterian Fellowship 1414 Jennings Dr, Park Hill, MO Every **Tuesday from 6PM-8PM** Starting August 8 running through November 7. Cost is \$15 for materials. For more information go to www.griefshare.org
- Caregiver Support Group:** Every 3rd Thursday from 5:30PM-6:30PM at NHC Desloge, 801 Brim Street, Desloge MO. Free to the community.
- MOPS This is Motherhood:** Held the 1st and 3rd Tuesday each month at 5:30pm at Memorial United Methodist Church, Farmington Mo. Contact Pastor Chris Reyes via email at chris.reyes@memorialumc.church
- VFW Breakfast:** Every Wednesday from 7am to 9:30am in Farmington VFW hall. Dine in, ALL YOU CAN EAT \$7, carry out available. OPEN TO THE PUBLIC.
- Celebrate Recovery:** Every Friday Night at 5:30, At Parkland Chapel, 1260 Karsch Blvd. Farmington, Mo 63640 www.ParklandChapel.org Contact Coordinator Jerrod Tune at CelebrateRecovery@ParklandChapel.org

CLASSES OFFERED BY PARKLAND HEALTH CENTER:

- Breastfeeding Classes** Call 573-756-6451 to register for classes!
- Diabetes Self-Management Class** Call 573-756-5779 to register for classes!

25th ANNUAL HEALTH AND RESOURCE EXPO

Our 25th Annual Community Health and Resource Expo is in motion. We have set the date for April, 13, 2024.

The expo will begin at 8am and end at noon.

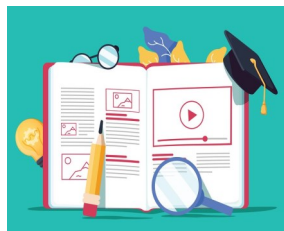
If you have participated in our Expo in the past, you know what a great event this is for our community showing the resources that are available.

If you have not participated in our Expo in the past, we invite you to come join the fun!

For more information about how you can participate in our 25th Annual Community Health and Resource Expo, contact Dawn Sander at St. Francois County Community Partnership 573-760-0212 or via email dawn@sfccp.org.

Or to pre-register, fill out the form on the back and return to our office.

WE LOOK FORWARD TO HEARING FROM YOU!



25th ANNUAL HEALTH AND RESOURCE EXPO

Pre-Registration

Organization Name: _____

Contact Person: _____ Phone: _____

Email: _____

Address: _____

City: _____ State: _____ Zip: _____

Please indicate your involvement and then
complete the appropriate section of this registration form:

- Exhibitor Adult Health Screening/Service Children's Health Screening / Safety program
 Children's Fun Activity Community Resource
 Career / Employment Resource Financial Resource / Aid

- \$25 for the 1st space, \$10 each additional space
- \$300 EVENT SPONSOR (Includes up to 5 tables.) (Must register by March 15th)
- Deadline for registration is March 29, 2024 (late registration will be contingent upon available space)

Brought to you by:
St. Francois County
Community Partnership
April 13, 2024 8am-Noon
At Mineral Area College
5270 Flat River Road





Thank You!

We would like to give special recognition to the many

friends & neighbors who contributed to

Season of Hope 2023

Serving 931 Children in 344 Families!

And to those we've inadvertently failed to mention...

THANK YOU SO VERY MUCH!

Sandra Miller, Bill and Christy Robbins, Michael and Laurel Sundhausen, James and Maude Kelly, Byron and Marinda Taylor, Dawn Sander, George Oliver, James Govreau, Anne Strangmeier, Kinch and Thelma Jones, Mary Mack, Albert and Karen Cleve, Joe and Sue Turner, Jeffrey Rosener, Terry and Mary Jinkerson, Bill and Jackie Berry, Douglas and Elizabeth Faries, Richard and Barbara Hite, Mary E. Kocher, Darlene Moore, John and Susan Richardson, Jeanne Boyer, Terry and Roline Heuring, William D. Burgess, Bill and Debbie Bunch, Michael and Cheryl O'Brien, Larry and Beth Weible, David and Kathy Cramp, Deborah Eck, William and Lisa Gibson, Sherry Kennon, Stephen and Sarah Slinkard, George Saum, Jill Prosser, Deborah Truman, Bruce and Clara Slinkard, Edalene Helms, Mark and Jill Claywell, Mary Ann Parker, Gary and Carol Inman, Paul and Penny Kennon, Joseph Murray III, George and David Oliver, Angela Dawn McDowell, Randall and Kay Anglin, Dale and Pat Pratt, Kevin and Kay DeGonia, Alan and Janice Halley, Eva Jane Simms, John and Pat Thomas, Glenda Dillon, Carl and Marie Bennett, Larry and Patricia Sumner, Albert C. Sullivan, Jerry and Dotty Bach, Ron and Barb Doss, Donna Masson, Joseph Middendorf, Rob Baker, Kim Pope, Tadao Leunammachack, Ann Blanchfield, Larry andCarolynn Busenbark, Staci Copeland, Ashely Deason, Bismarck Assembly of God, Ashely Deason, Craig or Jennifer Grimes, Primrose Baptist Church, Farmington Christian Church, Beta Sigma Phi XI Delta Omicron, Daughters of Ruth Circle, United Way (Girls Night Out Fundraiser), United Way, The Irondale Church of God, Harvest Christian Centre, EMEA Head Start Central Office, St. Francois County Cycle Servants, Grace Presbyterian Fellowship, Christian Sharing Group, MUMC, Church of God Knob Lick, Evening Primrose Garden Club, Farmington Lions Club, Believers Sunday School Class Fellowship FWB Church, Bunco Girls and Bunco Buddies, Class of Ruth, Norman L. Rigdon Post 5896, Farmington Presbyterian Church, Nancy Weber Garden Club, Bunco Group, Kiwanis Club of Farmington, Homebuilders Sunday School, ODACS, First State Community Bank, Gillam's Professional Lawn Service, LLC, Buffalo Wild Wings (Patton Wings Inc.), Heimburger Construction Inc., American Heritage Abstract, Anonymous Donor, My Turning Point Counseling LLC, Drug Court, Home State Health, Thurman, Shinn, and Company, Belgrade State Bank, Sonlight Parish Presbyterian Women, Dennis and Cynthia Barton, Shelly Bess, Ozark Federal Bank, Parkland Health Mart Pharmacy, Anne Ledbetter, Employees of Lead Belt Materials, Farmington School HOSA, North County Primary Teachers, William and Lisa Metcalf, Mark and Donna Clifford, Jerry and Breyanne Reed, Amanda Matthews, Briand and Stephanie Elders, Caleb and Cassidy Cartee, Ryan and Whitney Schaaf, Wendee Roth, Daniel and Paulette DeGonia, Chance and Cortney Doty, Kevin and Karen Hoff, Jeff M Grapperhaus, Chad and Sarah Winch, Chris and Crystal Harmon, Kyle and Anna Yount, Kelly Gentry and Vicki Yount, Sarah Schonhardt, Jenelle Kassabaum, Nathan and Charlene Pruet, Calinda James, Patricia Martin, Christopher and Jennifer Swift, Kelly Gentry and Vicki Yount, Terry and Sarah Duckett, North County High School Teachers, Joann Allen, Justin and Jennifer Marler, North County Middle School Teacher, Jaron and Katelyn Bridges, Michael and Angie Gillam,

North County Intermediate School Teachers, North County School District Custodians, North County School District Main Office, Parkside Elementary Teachers, Ronald and Roberta Schrum, Joshua and Roseanna Chilton, William and Amy Horton, Chad Lynn, Patricia Lyeki, Barry and Barbara Wilfong, Robert and Gae Scott, David and Penny Beers, Becki Mooney, Peter and Kristie Aubuchon, Amanda Gregory, Gregory and Sally Shinn, Sheryl Rowden, Vicki McAllister, Memorial United Methodist Church, Centenary United Methodist Church, Dennis Bouse, Howard and Candace Innam, Donyel Burns, Harry and Margie Brown, Hulse Properties Christmas Party, Farmington Correction Facility, Trinity Lutheran Church, Eddie and Michelle Pryor, Show Me Dental, John D. Denkler, Ashley Probst, Jon and Kelly Peacock, St. Francois Co. Emergency Serv. IAFF Local 370, Anthony Taylor, Ashley Davis, Howard and Debra Hoehn, Keith and Virginia Smith Family Foundation, First State Community Bank, Stephanie Gehrs, The Employees of Medical Arts Specialists, Trinity Lutheran Church Helping Hands, Sarah Watkins, Tommy and Amanada Sampson, Lucas and Megan Bell, Bradley Shackelford, Charles and Ashlie Scism, Brock and Tiffani Busenbark, Jefferson Elementary, Linda Ragsdale, Mary Pigg, Caleb Boyer, Tim and Tina Miller, Jessica Howard, Steven Rogers Memorial, Dr. Rodney and Catherine Rhodes, Phyllis Pearman, Patsy Gallagher, John and Kristee Bloom, Farmington High School, North County School District, Jaelyn Thompson, N.C. School in Memory of Anthony Francis, Michael and Gail Agers, Kimberly Heberlie, Racheal Layton, United Way, Girls Night Out Event, St. Francois County Cycle Servants, Evan and Colleen Williams, David and Diane Huckstep, Dennis and Margaret Rogers Family, Meredith Weible, Hope Pokerny, Len Boyer, Terry and Beverly Hovis, Sam Scism Ford, EMAA Chili Dinner, 24th Judicial Drug Court Alumni, Timothy Whitener, F. or C., Cole, Bismarck School District, Heather Black, Lindsay Kearns, David Cramp, Stan and Margie Murphy, North County, Tina and Steven Ruble, Kasey Beaton, Darlene Moore, Employees of MoDot, St. Francois County, Fred and Diane Schnable, Brian and Donna Gallagher, Ashley Person, First Baptist Church Adult Sunday School Class, Desloge United Methodist Church, Jacob Emanuel, Presbyterian Manor Employees, Lincoln Middle School, Farmington School Golf Team, Washington Franklin School, Roosevelt School, Truman School, Randy and Linda Grogan, Mandi Smith, Freedom Realty Mo, LLC, Eric and Michelle Clowdus, Stacey Schweitzer, 12 West Bar & Grill, Farmington High School, Jewell Peppers, Farmington Middle School, Stephanie Nokes, Deborah Truman, Savanna Shields, and Panera Bread.

